



# CALF MANAGEMENT ACADEMY

Attica Veterinary Associates, P.C.  
116 Prospect Street, Attica, NY 14011

## BASIC CALF CARE SKILL SHEETS

### 6a. Insert Metal Tag in a Calf's Ear

#### Timing:

- A heifer calf needs to be tagged as soon as necessary for this farm in order to maintain the connection to her dam.

#### Equipment:

- Tagging tool.
- Metal tags.

#### Action Required:

- Make a written record of the tag number and the dam's ID.
- Prepare the tag and tagging tool.
- Restrain the calf.
- Insert tag.

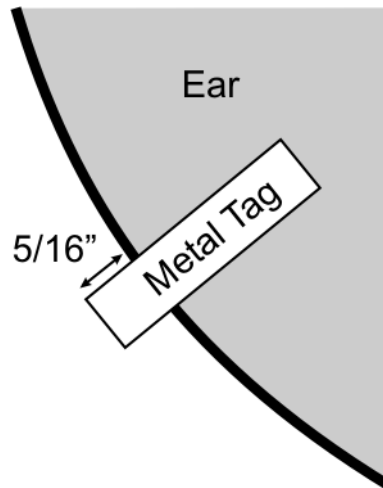
#### Physical Appearance:

- The tag is inserted  $\frac{1}{3}$ <sup>rd</sup> of the distance from the head to the tip of the ear.



## Metal tagging a calf – page two

- The tag is inserted leaving about  $5/16^{\text{th}}$  inch between the fold in the tag and ear surface (distance equals about diameter of an ordinary lead pencil).



### Safety:

- If done in the pen with the dam, keep an eye on her. If she is aggressive leave the pen immediately and get help.

### Biosecurity:

- Eliminate as much as possible contact between the newborn calf and adult cow manure. Remember to clean adult cow manure off your boots and clothing before handling a newborn calf.



# CALF MANAGEMENT ACADEMY

Attica Veterinary Associates, P.C.  
116 Prospect Street, Attica, NY 14011

## BASIC CALF CARE SKILL SHEETS

### 6b. Insert Plastic Button in a Calf's Ear

#### Timing:

- A heifer calf, in order to be identified with an electronic scanner, needs to have an ID button in her ear.

#### Equipment:

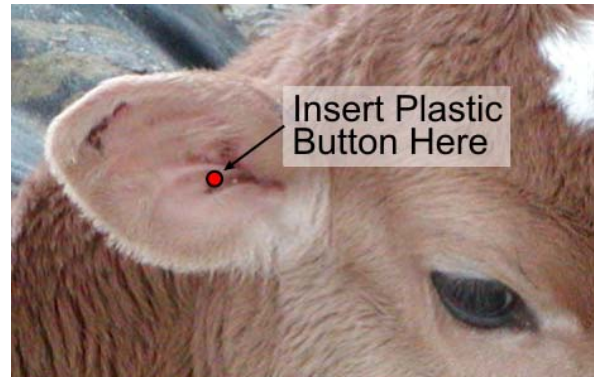
- Tagging tool.
- Plastic buttons.

#### Action Required:

- Make a written record of the button number and the matching metal tag.
- Prepare the button and tagging tool.
- Restrain the calf.
- Insert the button

#### Physical Appearance:

- The button is inserted  $\frac{1}{3}$ <sup>rd</sup> of the distance from the head to the tip of the ear.



## **Inserting a Plastic Button – page two**

### **Safety:**

- **If done in the pen with the dam, keep an eye on her. If she is aggressive leave the pen immediately and get help.**

### **Biosecurity:**

- **Eliminate as much as possible contact between the newborn calf and adult cow manure. Remember to clean adult cow manure off your boots and clothing before handling a newborn calf.**